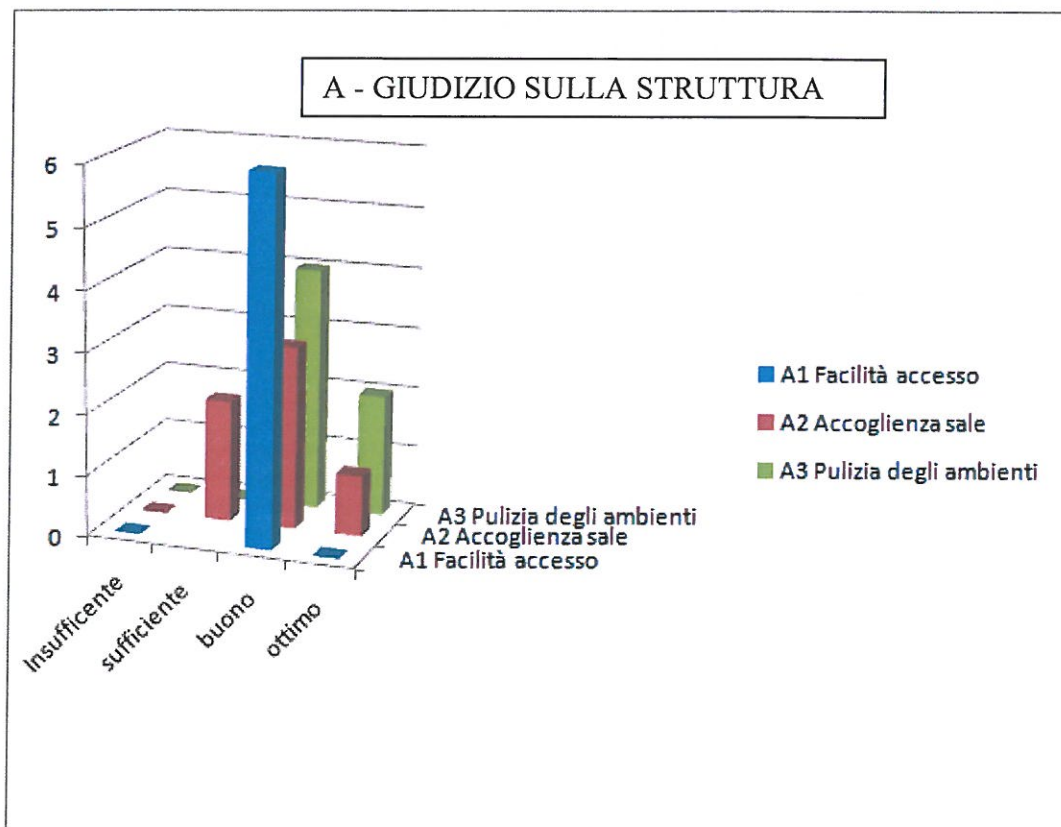
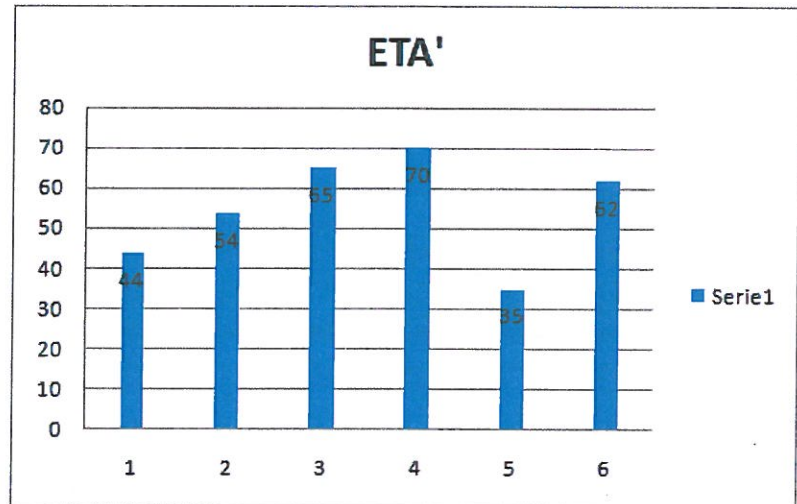
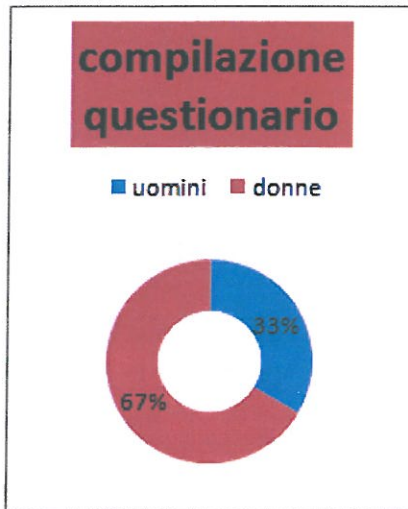




**ANALISI DATI ANNO 2015**  
**QUESTIONARIO SODDISFAZIONE CLIENTE - PUNTO PRELIEVI**



**M10(b)CV10 - Analisi Dati**

Redatto in data 08/02/2016 dal RQ Gianluca Filiberti

Verificato dal RDQ Piciucchi Antonio

Approvato dal CDPL in data 10/02/2016

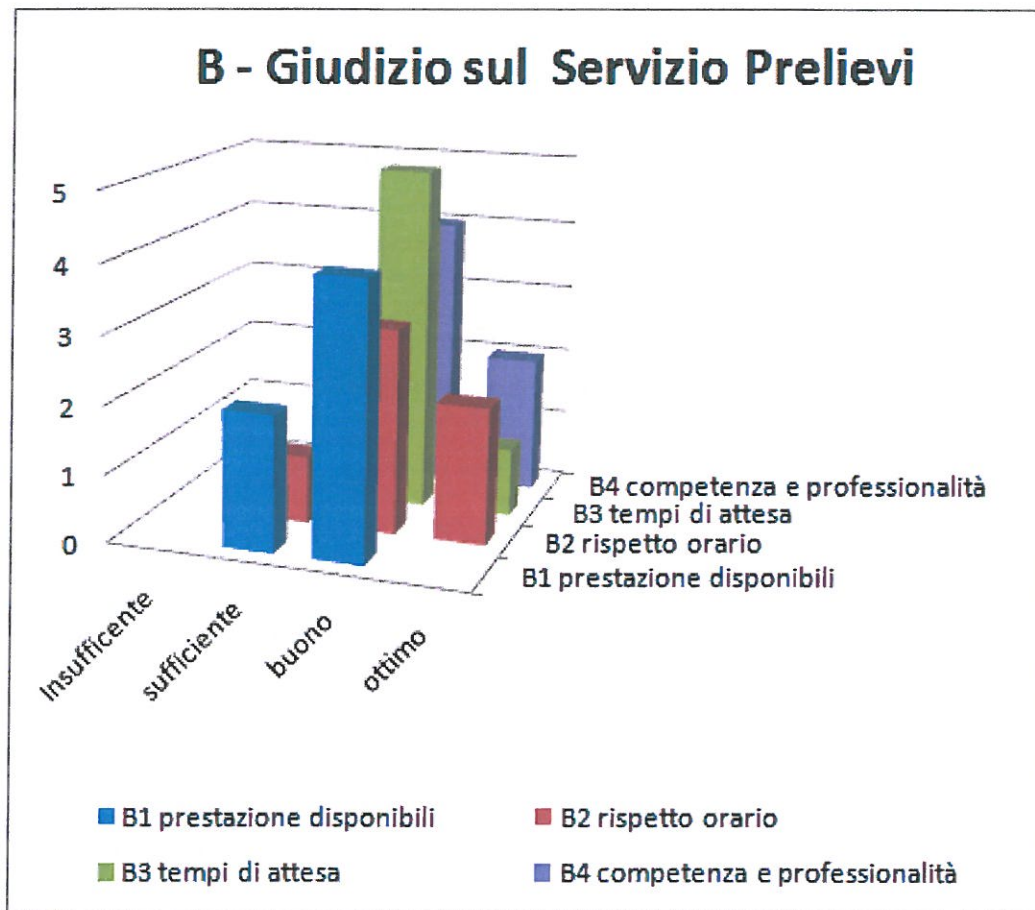
Revisione 0



**Associazione Pro-Luchiano**  
**CROCE VERDE**  
**O.n.l.u.s.**  
**Lugnano in Teverina**  
**Tel. 0744.902646 - 348.8610346**



### B - Giudizio sul Servizio Prelievi



**M10(b)CV10 – Analisi Dati**

Redatto in data 08/02/2016 dal RQ Gianluca Filiberti

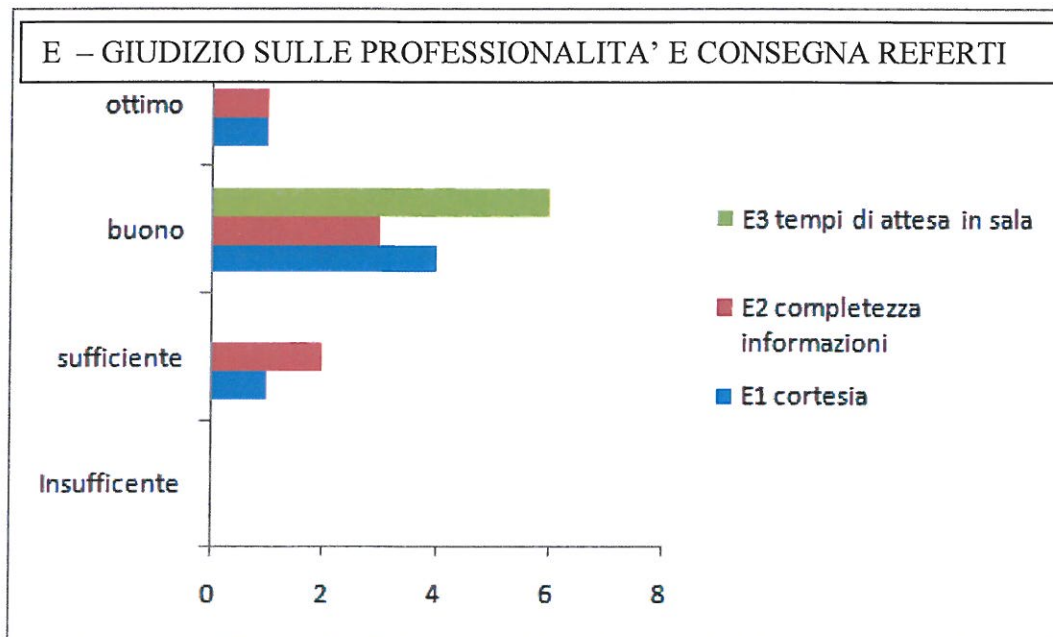
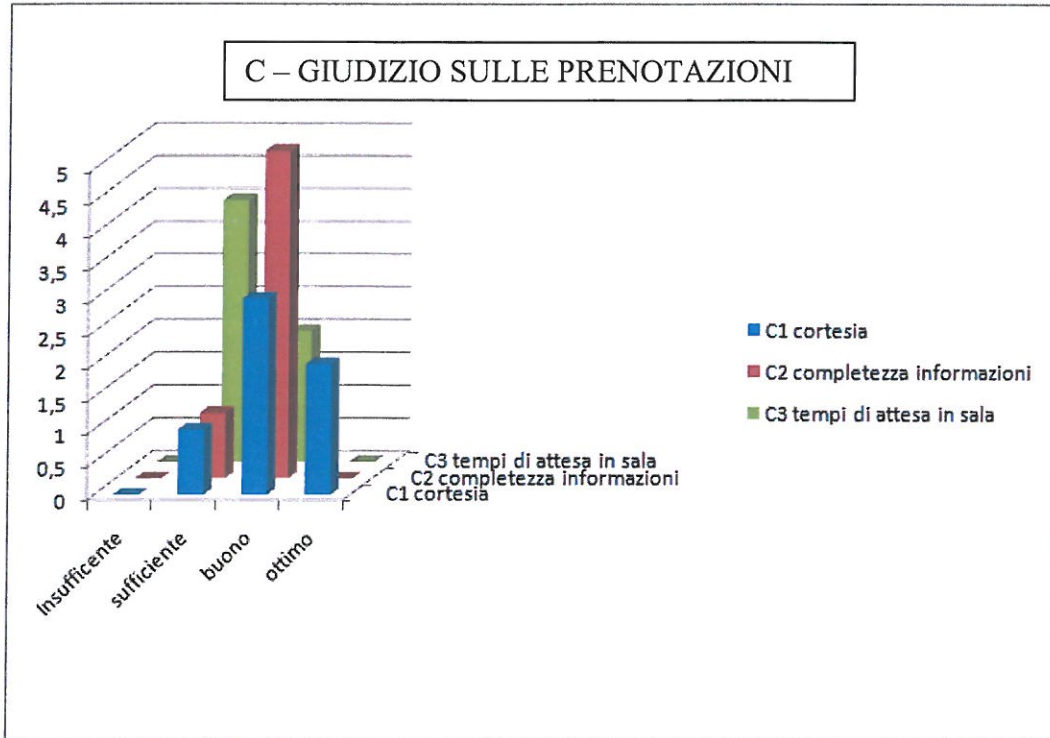
Verificato dal RDQ Piciucchi Antonio

Approvato dal CDPL in data 10/02/2016

Revisione 0



# Associazione Pro-Luchiano **CROCE VERDE** O.n.l.u.s. Lugnano in Teverina Tel. 0744.902646 - 348.8610346



## M10(b)CV10 – Analisi Dati

Redatto in data 08/02/2016 dal RQ Gianluca Filiberti

Verificato dal RDQ Piciucchi Antonio

Approvato dal CDPL in data 10/02/2016

Revisione 0